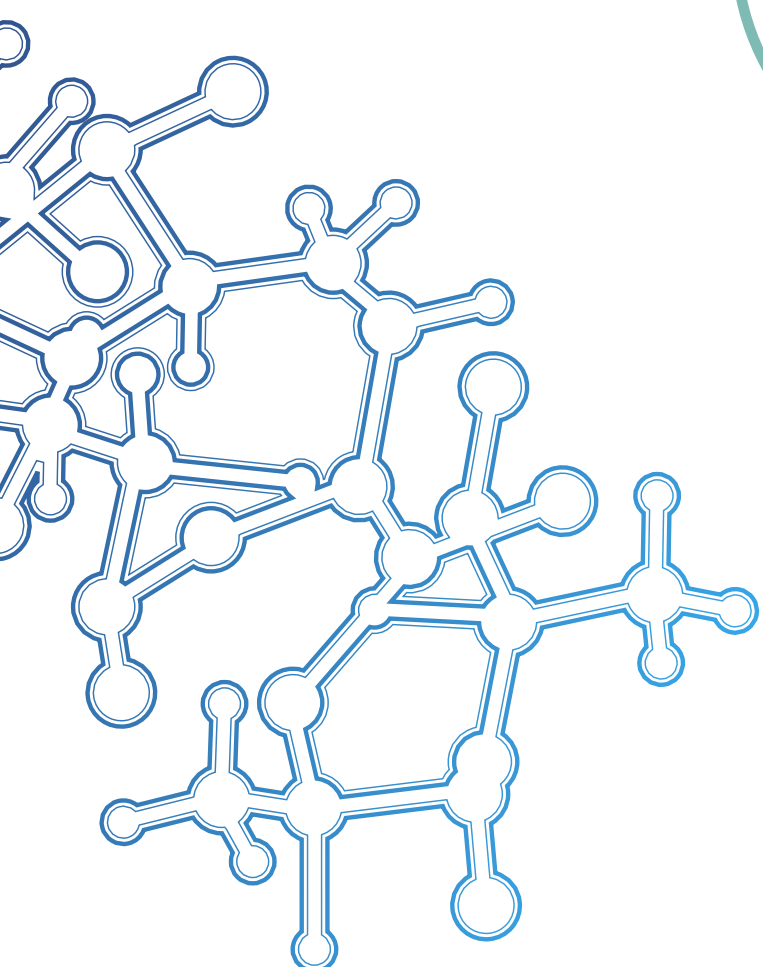


Surgical
Technique
Guides

ActivaPin™

HAMMERTOE
TECHNIQUE



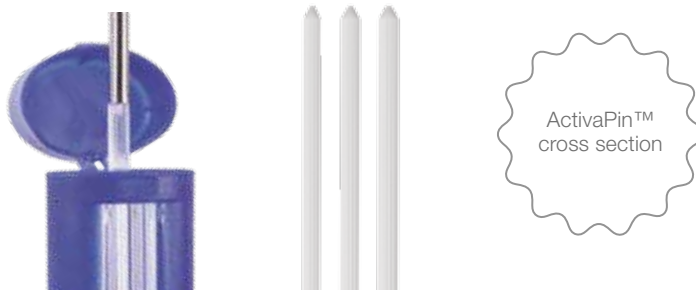
Why ActivaPin™?

ActivaPin™ is excellent in hammertoe fixation

- Easy and time saving placement using Bioretec's high quality instruments
- Improved rotational stability due to grooved surface design and Self-Locking SL™ technology *
- Anatomic positioning of toe after implantation due to bendability in room temperature
- Easy to cut
- No transdermal hardware or secondary removal procedure for patient comfort

Thousands of surgeons worldwide have chosen ActivaPin™ for their bioabsorbable implant. ActivaPin™ has safe, 10-year clinical history in orthopaedics.

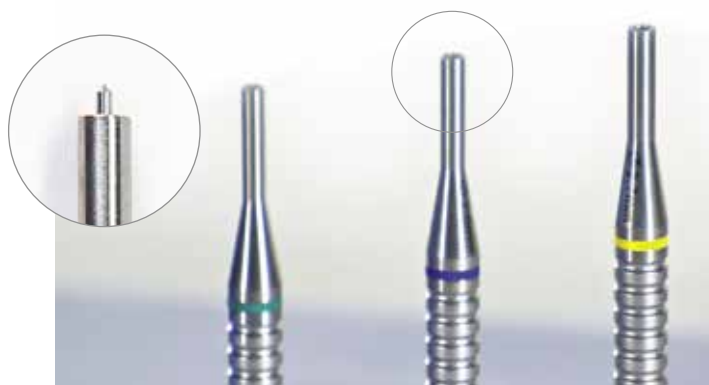
ActivaPin™ has superior strength properties compared to other bioabsorbable pins. ActivaPin™ is made of PLGA** and biodegrades in the body safely and in a controlled manner within approximately two years.



ActivaPin™ Applicator

ActivaPin™ Applicator enables quick and easy placement of the pin. Unique tip keeps pin in place without risk of dropping pin during the insertion. Color coding helps to choose right tool for pin you have chosen.

ActivaPin™ is protected by patents: EP 1864616, EP 1902680, FI 124190, US 9,078,714 B2. EP, US, FI Patent Pending



* Self-Locking™ technology - the diameter of the implant expands

** PLGA - poly(lactic-co-glycolic acid), optimal combination with a long history of safe medical use and the degradation by hydrolysis into alpha-hydroxy acids that are metabolized by the body.

1.5

ActivaPin™ Hammertoe 1.5 mm Solution with Reusable Instruments

- B-AP-1550 ActivaPin™ 1.5 mm x 50 mm
- B-IP-1500 Applicator 1.5, reusable, for 1.5 mm pins
- B-IP-1501 K-Wire Ø 1.6 mm, length 130 mm, for 1.5 mm pins
Optional: K-Wire Ø 1.5 mm can be used for soft bone quality.

2.0

ActivaPin™ Hammertoe 2.0 mm Solution with Reusable Instruments

- B-AP-2050 ActivaPin™ 2.0 mm x 50 mm
- B-IP-2000 Applicator 2.0, reusable, for 2.0 mm pins
- B-IP-2001 K-Wire Ø 2.0 mm, length 130 mm, for 2.0 mm pins

2.7

ActivaPin™ Hammertoe 2.7 mm Solution with Reusable Instruments

- B-AP-2750 ActivaPin™ 2.7 mm x 50 mm
- B-IP-2700 Applicator 2.7, reusable, for 2.7 mm pins
- B-IP-2701 K-Wire Ø 2.8 mm, length 130 mm, for 2.7 mm pins
Optional: B-IP-2703 Drill bit Ø2.7 mm, for 2.7 mm pins/nails, quick coupling

See ActivaPin™ Hammertoe technique animation: www.bioretec.com/hammertoe

ActivaPin™ Hammertoe Technique

Excellent bioabsorbable hammertoe fixation without drawbacks of metal k-wires



1. Use the k-wire to drill the depth of the proximal phalanx.



2. Use the k-wire to drill the depth of the middle phalanx. Laser lines on the k-wire are in every 10 mm.



3. Insert the ActivaPin™ into the proximal phalanx using ActivaPin™ Applicator and mallet. Gently tap the pin until it is at the bottom of the drill hole.



4. Cut the pin obliquely corresponding the depth of the middle phalanx.



5. Use forceps to insert the pin into the middle phalanx. ActivaPin™ is bendable in room temperature.



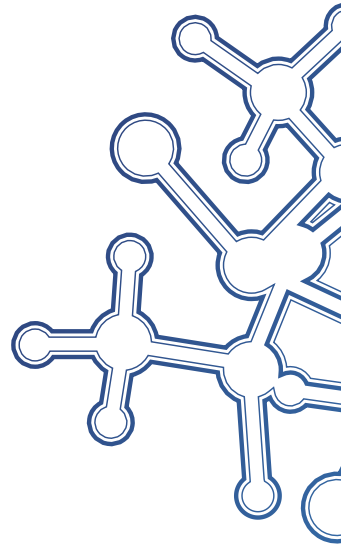
6. Final repair.



The Mission of Bioretec is to develop and bring into clinical use innovative bioabsorbable products and surgical solutions which improve patient outcome, user friendliness and cost-efficiency in clinical care.

Implants that do more – It's Bioretec

www.bioretec.com



bioretec

Manufacturer
Bioretec Ltd.
Hermiankatu 22,
FI-33720 Tampere, Finland
Tel. +358 20 778 9500
sales@bioretec.com
www.bioretec.com

Rev.1.0.