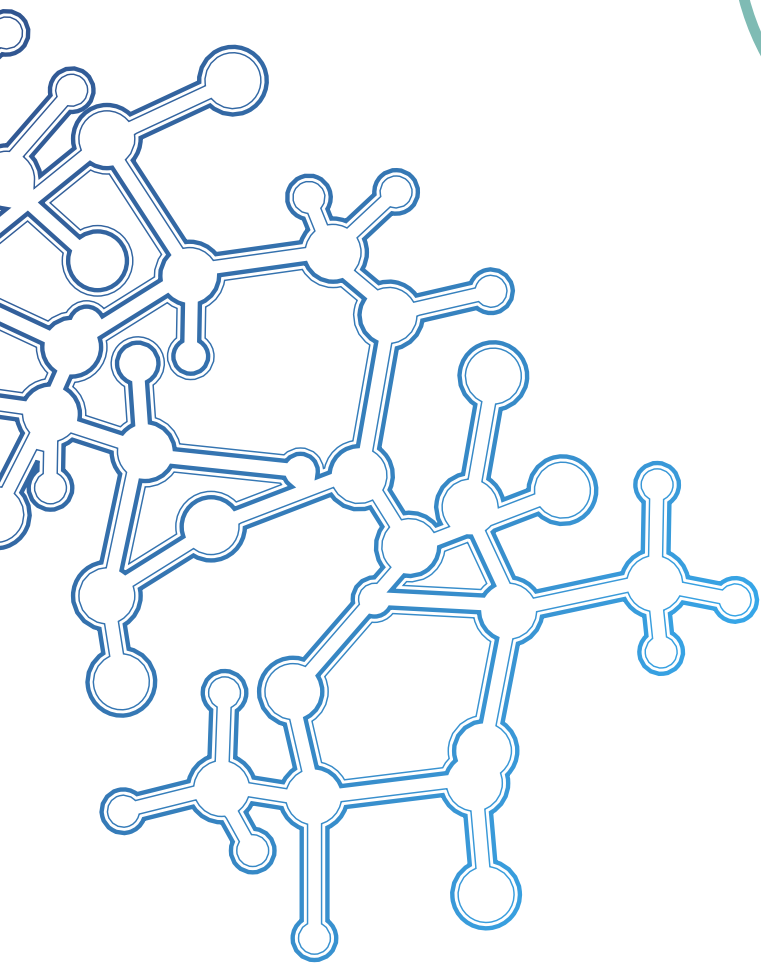
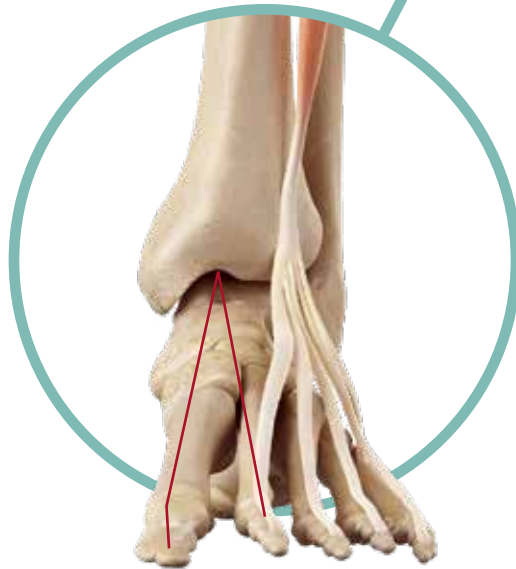


Surgical
Technique
Guides

ActivaPin™
CHEVRON
TECHNIQUE



Why ActivaPin™?

ActivaPin™ is excellent in chevron osteotomy

- Easy and time saving placement using Bioretec's high quality instruments
- Improved rotational stability due to grooved surface design and Self-Locking SL™ technology *
- No transdermal hardware or secondary removal procedure for patient comfort

Thousands of surgeons worldwide have chosen ActivaPin™ for their bioabsorbable implant. ActivaPin™ has safe, over 10 years of clinical history in orthopaedics.

ActivaPin™ has superior strength properties compared to other bioabsorbable pins. ActivaPin™ is made of PLGA** and biodegrades in the body safely and in a controlled manner within approximately two years.



ActivaPin™ Applicator

ActivaPin™ Applicator enables quick and easy placement of the pin. Unique tip keeps pin in place without risk of dropping pin during the insertion. The pin applicators are color coded according to the pin diameter.

ActivaPin™ is protected by patents: EP 1864616, EP 1902680, FI 124190, US 9,078,714, EP 2127608, US 9,393,060, FI 124190

- * Self-Locking™ technology - the diameter of the implant expands
- ** PLGA - poly(lactic-co-glycolic acid), optimal combination with a long history of safe medical use and the degradation by hydrolysis into alpha-hydroxy acids that are metabolized by the body.



ActivaPin™ Chevron Osteotomy 2.0 mm Solution with Reusable Instruments

- | | |
|-----------|---|
| B-AP-2030 | ActivaPin™ 2.0 mm x 30 mm |
| B-IP-2000 | Applicator 2.0, reusable, for 2.0 mm pins |
| B-IP-2001 | K-Wire Ø 2.0 mm, length 130 mm, for 2.0 mm pins, for drilling |

ActivaPin™ Chevron Osteotomy 2.0 mm Solution with Disposable Instruments

- | | |
|------------|--|
| B-AP-2030 | ActivaPin™ 2.0 mm x 30 mm |
| B-DIP-2000 | Applicator with K-Wire Ø 2.0 mm, disposable, for 2.0 mm pins |

See ActivaPin™ chevron technique animation: www.bioretec.com

ActivaPin™ Chevron Osteotomy Technique

Excellent bioabsorbable chevron fixation without drawbacks of metal k-wires



Cut the chevron osteotomy at approximately 60° angle using an oscillating saw.



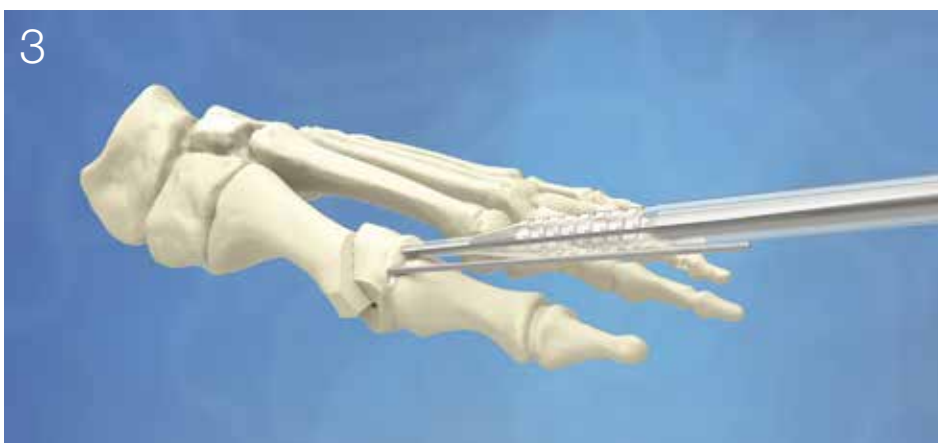
After chevron osteotomy displace the capital fragment laterally and temporarily fix with a 1.25 or 1.5 K-Wire.

Use the 2.0 mm K-Wire to drill the hole for the ActivaPin™ 2.0 x 30 mm.

Laser lines of K-Wire are in every 10 mm.

Instruments

B-IP-2001 K-Wire Ø 2.0 mm or
B-DIP-2000 Applicator with K-Wire
Ø 2.0 mm, disposable,
for 2.0 mm pins



Pick up the ActivaPin™ from its holder. For chevron osteotomy use applicator with blue color coding.

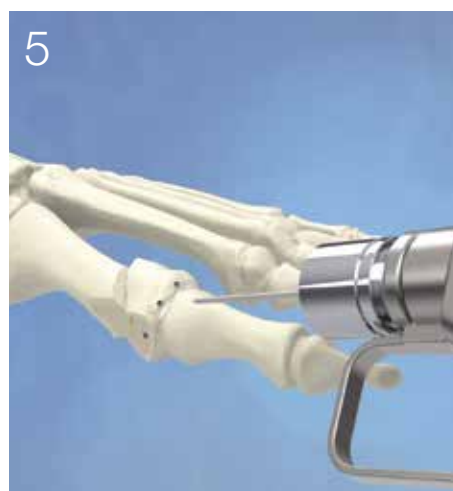
Insert the ActivaPin™ using the ActivaPin™ Applicator or Disposable Pin Applicator and mallet. Gently tap the pin in place.

Instruments

B-IP-2000 Applicator Ø 2.0 mm or
B-DIP-2000 Applicator with K-Wire
Ø 2.0 mm, disposable,
for 2.0 mm pins



Remove the medial flare.



Remove the K-Wire.



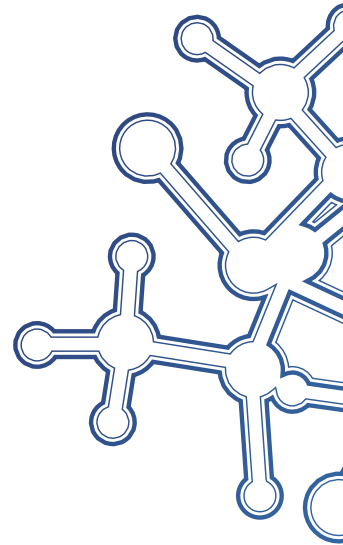
The repair is complete.



The Mission of Bioretec is to develop and bring into clinical use innovative bioabsorbable products and surgical solutions which improve patient outcome, user friendliness and cost-efficiency in clinical care.

Implants that do more – It's Bioretec

www.bioretec.com



bioretec

Manufacturer
Bioretec Ltd.
Hermiankatu 22,
FI-33720 Tampere, Finland
Tel. +358 20 778 9500
sales@bioretec.com
www.bioretec.com

Rev.0.0.